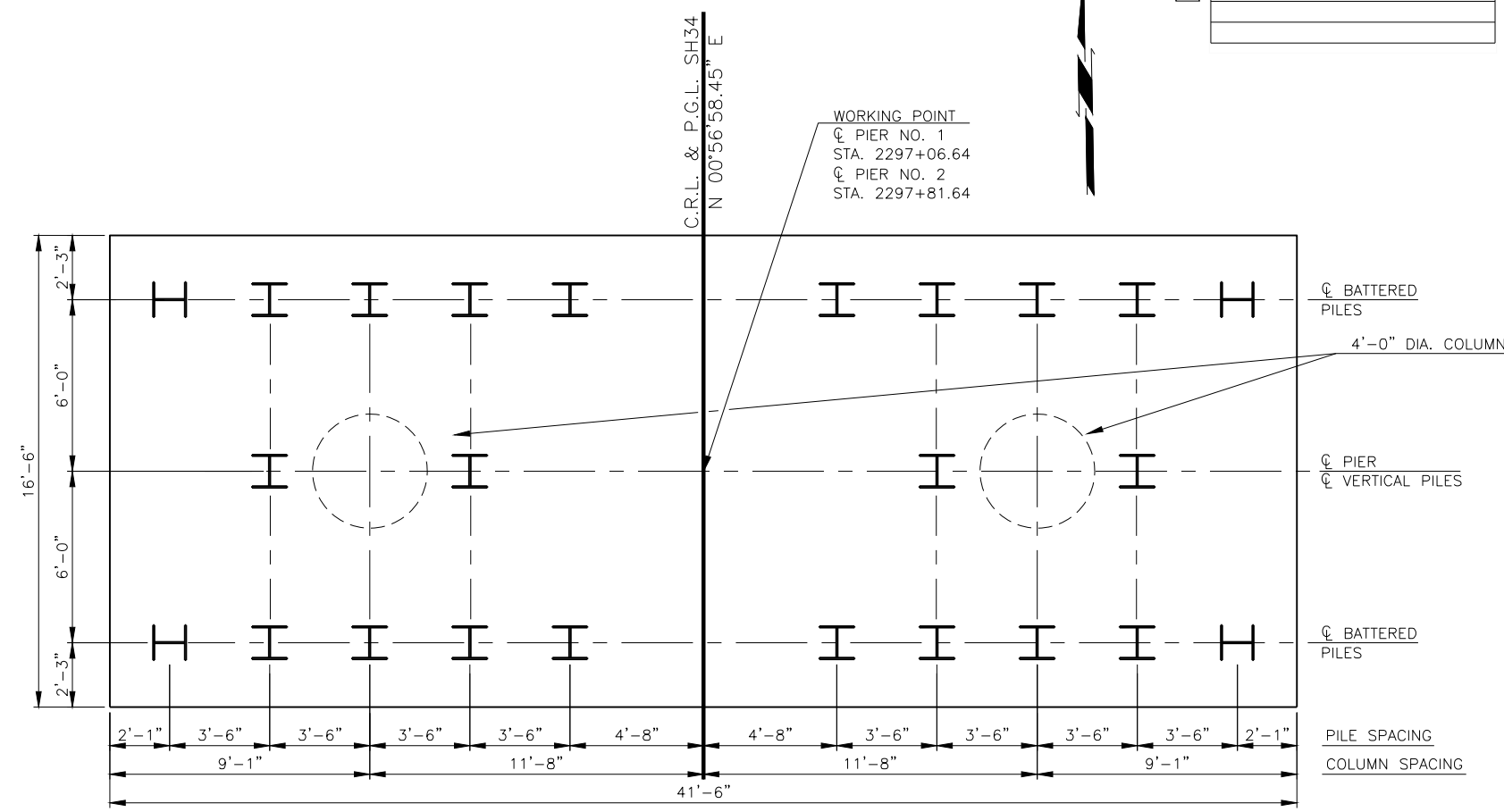
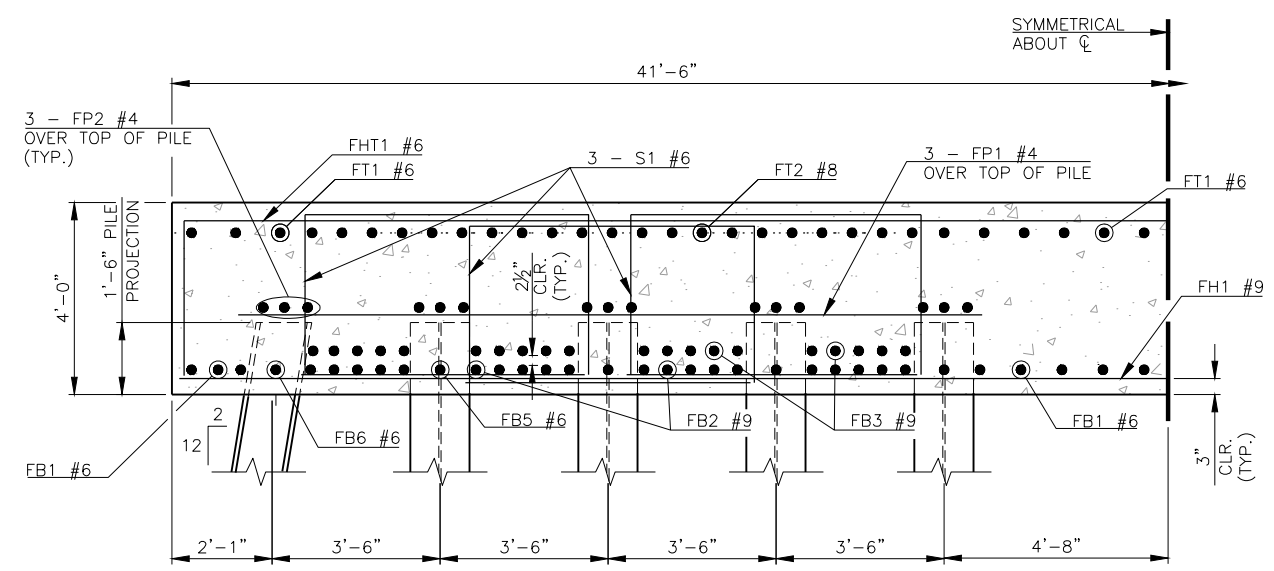


**SECTION C-C**



**PIER FOOTING PLAN**

PILE LOCATIONS AND FOOTING DIM.



**SECTION D-D**

- NOTE:  
ALL PIER FOOTING PILES ARE HP14X89
- NOTE:  
PLACE BARS AS SHOWN, MINIMUM HORIZONTAL CLEARANCE BETWEEN BARS IS 3".
- NOTE:  
FOR REINFORCING PLAN, SEE SHEET 30.
- NOTE:  
FOR BAR BENDS AND BAR LIST, SEE SHEET 31.

DESIGN	J.W.H.	SH34 OVER S. PERSIMMON CREEK	WOODWARD COUNTY
DRAWN	R.A.P.	BRIDGE A	
CHECKED	J.W.H.	<b>PIER NO. 1 AND 2 DETAILS (SHEET 2 OF 3)</b>	
APPROV.	T.A.C.		
SQUAD	CEC		
		JOB PIECE NO. 28825(04)	SHEET NO. 29